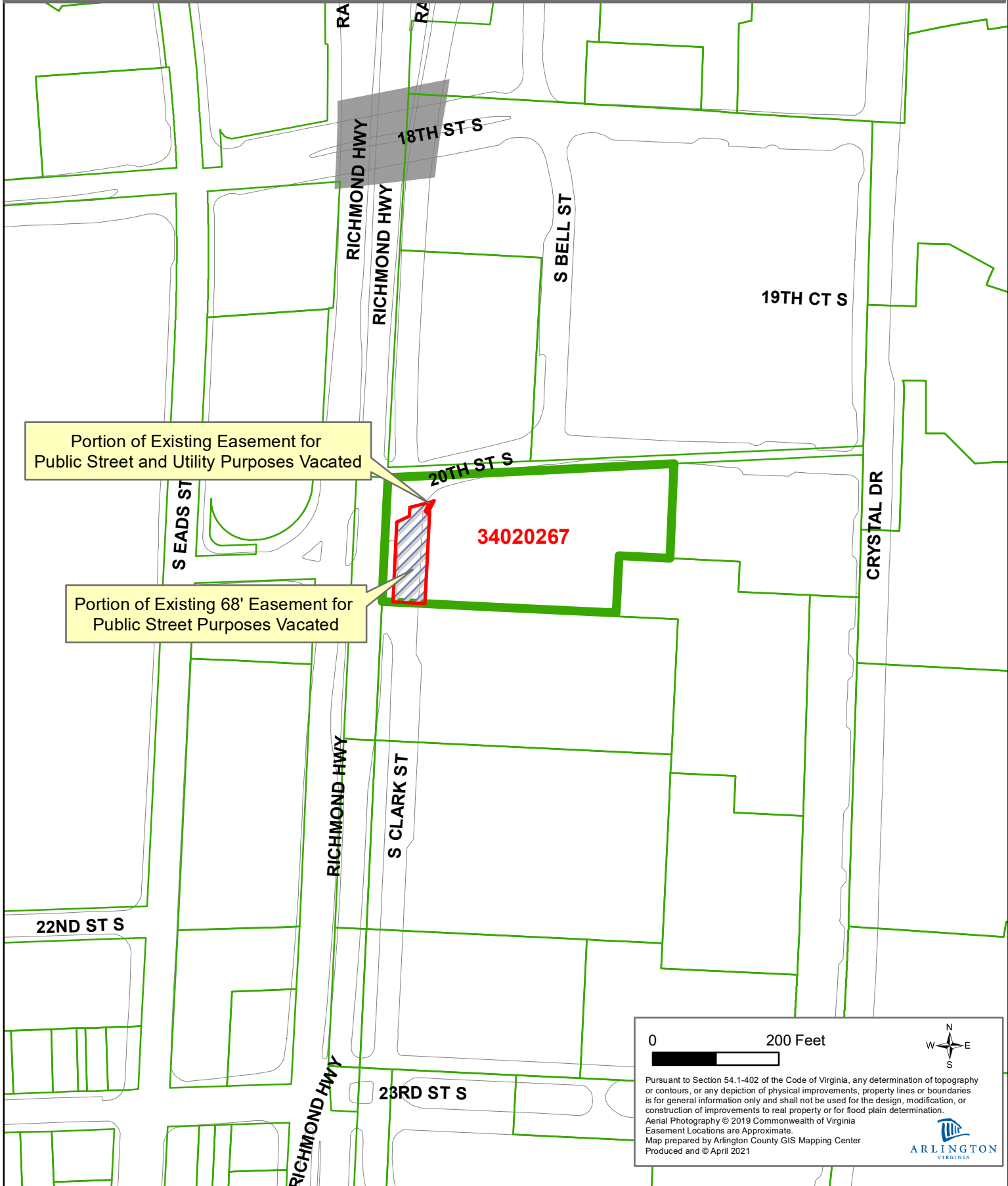


Vicinity Map
Vacations Related to 2001 Richmond Highway Site Plan
RPC # 34020267



Portion of Existing Easement for Public Street and Utility Purposes Vacated

Portion of Existing 68' Easement for Public Street Purposes Vacated

0 200 Feet

Pursuant to Section 54.1-402 of the Code of Virginia, any determination of topography or contours, or any depiction of physical improvements, property lines or boundaries is for general information only and shall not be used for the design, modification, or construction of improvements to real property or for flood plain determination.
Aerial Photography © 2019 Commonwealth of Virginia
Easement Locations are Approximate.
Map prepared by Arlington County GIS Mapping Center
Produced and © April 2021