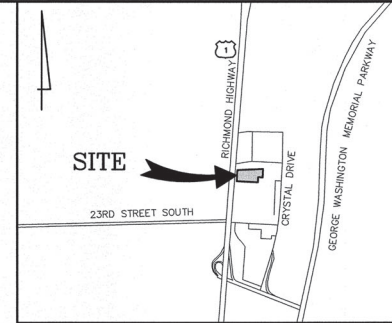


NOTES

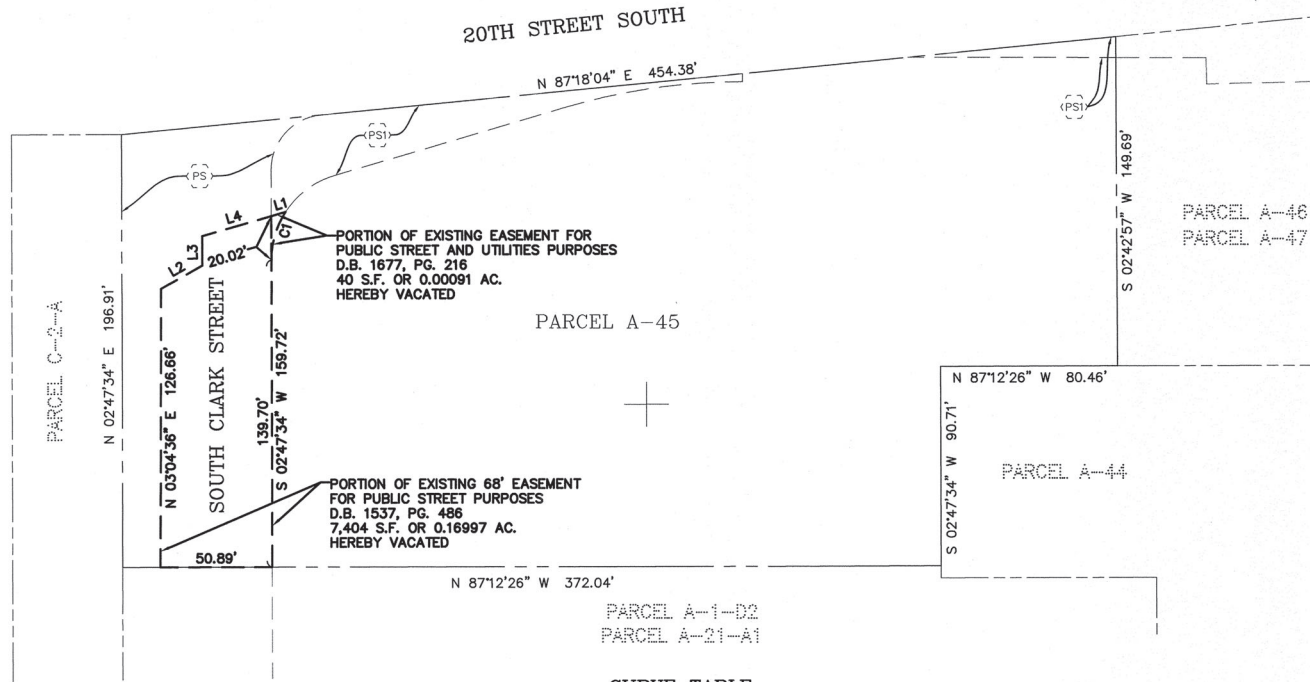
1. THE PROPERTY DELINEATED HEREON APPEARS ON ARLINGTON COUNTY REAL PROPERTY IDENTIFICATION MAP 75-16 AS REAL PROPERTY CODE (RPC) NUMBER 34020267.
2. THE PROPERTY IS NOW IN THE NAME OF CESC PLAZA LIMITED PARTNERSHIP AS RECORDED IN DEED BOOK 4282 AT PAGE 1281 AMONG THE LAND RECORDS OF ARLINGTON COUNTY, VIRGINIA.
3. BOUNDARY INFORMATION AS SHOWN HEREON WAS COMPILED FROM EXISTING LAND RECORDS OF ARLINGTON COUNTY.
4. THE NORTH MERIDIAN INFORMATION SHOWN HEREON WAS ESTABLISHED BY GPS METHODS AND IS REFERENCED TO THE VIRGINIA COORDINATE SYSTEM (VCS) OF 1983, NORTH ZONE.
5. THIS PLAT WAS PREPARED WITHOUT BENEFIT OF A TITLE REPORT, THEREFORE ALL UNDERLYING EASEMENTS MAY NOT BE SHOWN.



VICINITY MAP
NOT TO SCALE

EASEMENT LEGEND

- (PS) EXISTING 68' EASEMENT FOR PUBLIC STREET PURPOSES D.B. 1537, PG. 486
- (PSI) PORTION OF EXISTING EASEMENT FOR PUBLIC STREET AND UTILITIES PURPOSES D.B. 1677, PG. 216



CURVE TABLE

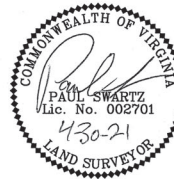
CURVE	RADIUS	ARC LENGTH	CHORD BEARING	CHORD LENGTH	DELTA ANGLE	TANGENT
C1	40.00'	23.19'	S 19°23'46" W	22.87'	33°13'16"	11.93'

LINE TABLE

LINE	BEARING	DISTANCE
L1	N 76°42'31" E	6.80'
L2	N 63°23'40" E	21.59'
L3	N 02°43'27" E	13.39'
L4	N 76°42'31" E	32.75'

PLAT SHOWING
THE VACATION OF A PORTION OF AN
EXISTING EASEMENTS FOR PUBLIC
STREET AND UTILITIES PURPOSES

ON
PARCEL A-45
CRYSTAL PLAZA
ARLINGTON COUNTY, VIRGINIA
SCALE: 1" = 40' DATE: JUNE 1, 2020



REVISION	
2/25/21	ENGINEER LINE WORK REVISIONS
4/13/21	ENGINEER LINE WORK REVISIONS
4/30/21	COUNTY COMMENTS

Bowman CONSULTING

Bowman Consulting Group, Ltd.
13461 Sunrise Valley Drive, Suite 500
Herndon, Virginia 20171
Phone: (703) 464-1000
Fax: (703) 461-9720
www.bowmanconsulting.com

© Bowman Consulting Group, Ltd.
DWG: P:\140074 - 2001 RICHMOND HIGHWAY\140074-01-001 (SUR) - 2001 RICHMOND HIGHWAY 41\SURVEY\PLATS
BY: CEP
CHK: PS
QC: []

BGC PROJECT NO: 140074-01-001 TASK: 1 COUNTY REF NO: SHEET 1 OF 1

ARLINGTON COUNTY DEPARTMENT OF ENVIRONMENTAL SERVICES
DIVISION OF TRANSPORTATION

RECOMMENDED FOR APPROVAL:

APPROVED:

PLAT EXAMINER

SUBDIVISION AND BONDS ADMINISTRATOR

