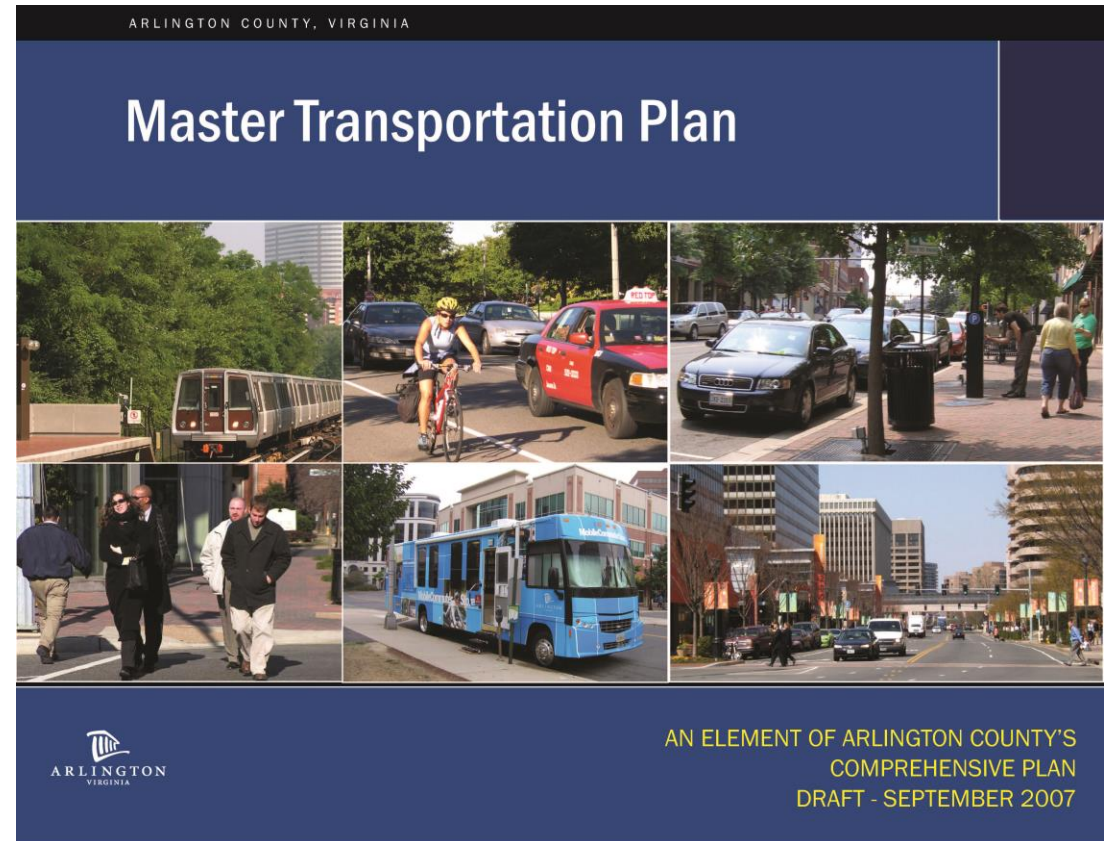


The Master Transportation Plan (MTP)

- Adopted in eight parts
- Goals & Policies element and MTP Map – adopted in 2007
- Bicycle, Pedestrian and Demand and Systems Management elements - adopted in 2008
- Transit and Parking and Curb Space Management elements - adopted in 2009
- Streets element – adopted in 2011



Significance of the MTP

- Part of Arlington County's *Comprehensive Plan*. Similar to the General Land Use Plan (GLUP) and Public Spaces Master Plan
- Provides policy guidance for development of other plans and projects
- Periodic reviews and amendments to the MTP undergo a public review process including hearings at commissions and County Board

Amendments & Updates

- Amendments are made as needed. Mostly made in coordination with other County Board approved plans (sector plans, area plans, site plans).
- Updates are less frequent (about every 5 to 10 years). Transit Element update was approved earlier this year.
- Process involves public hearings by the Transportation and Planning commissions and approval by the County Board.

MTP Vision

- Arlington's vision of transportation is a system that provides equity and access to all users. It involves concentration of investment in ways that yield the greatest good not only from a transportation standpoint, but also for overall quality of life of Arlington residents and workers. Arlington's vision for its transportation system also supports community efforts to improve our natural environment and achieve better public health and fitness.

MTP Goals

- Provide high-quality transportation services
- Move more people without more traffic
- Promote safety
- Establish equity
- Manage effectively and efficiently
- Advance environmental sustainability

General Transportation Policies


- A. Integrate Transportation with Land Use
- B. Support the Design and Operation of Complete Streets
- C. Manage Travel Demand and Transportation Systems

Bicycle Element Goals

1. Complete the Bikeway Network with a focus on overcoming barriers.
2. Provide high-quality bicycling facilities as part of all street improvement projects.
3. Provide convenient, covered and secure bicycle parking at transit stations, schools, County facilities and in commercial centers.
4. Manage the trails for safety with increased use.
5. Require the provision of appropriate facilities to support bicycling.
6. Create a community culture that embraces bicycle use as a mainstream travel mode.
7. Annually collect bicycling data on County streets and trails.
8. Conduct an ongoing safe bicycle to schools program including educational programs for children and adults.
9. Implement a bike-sharing program in the transit corridors and other densely-developed areas.

Recent Changes to Local Bicycling Environment

- Establishment and spread of Capital Bikeshare
- Growth in BikeArlington outreach and education program
- Advances in state-of-the-art in bicycle facility design
- New interaction with Arlington Public Schools on student travel
- Blossoming of “Bike Culture” in Arlington & Washington DC area
- Shift of attention to “Interested but Concerned” population



Smart Routes, Smart Choices

Parent Travel Survey

Encuesta de los Padres acerca del Transporte


<http://sgiz.mobi/s3/APS-Parent-Survey-2016>

How do you get to school?

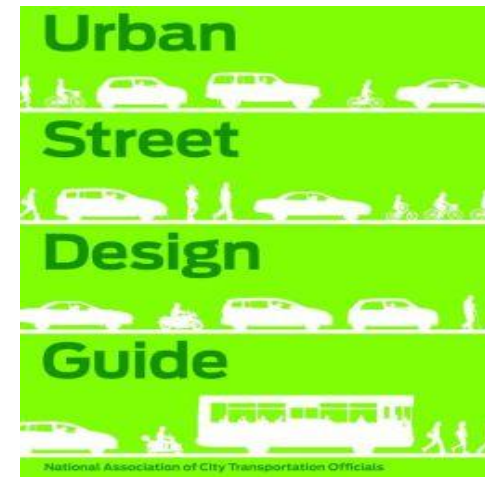
Please help Arlington Public Schools understand your current school transportation practices and the reasons for them. Go to the link to participate in the parent survey. To respond in Spanish, please click on the link on the top of the page. The survey will close Friday, November 4. Thank you for your participation.

¿Cómo va usted a la escuela?

Por favor ayude a las Escuelas Públicas de Arlington a entender cuáles son sus prácticas actuales de transporte escolar y de los motivos para ellas. Diríjase al enlace siguiente para participar en la encuesta para padres. Para responder en español, oprima sobre el enlace ubicado en la parte superior de la página. La encuesta cerrará el 4 de noviembre. Gracias por su participación.

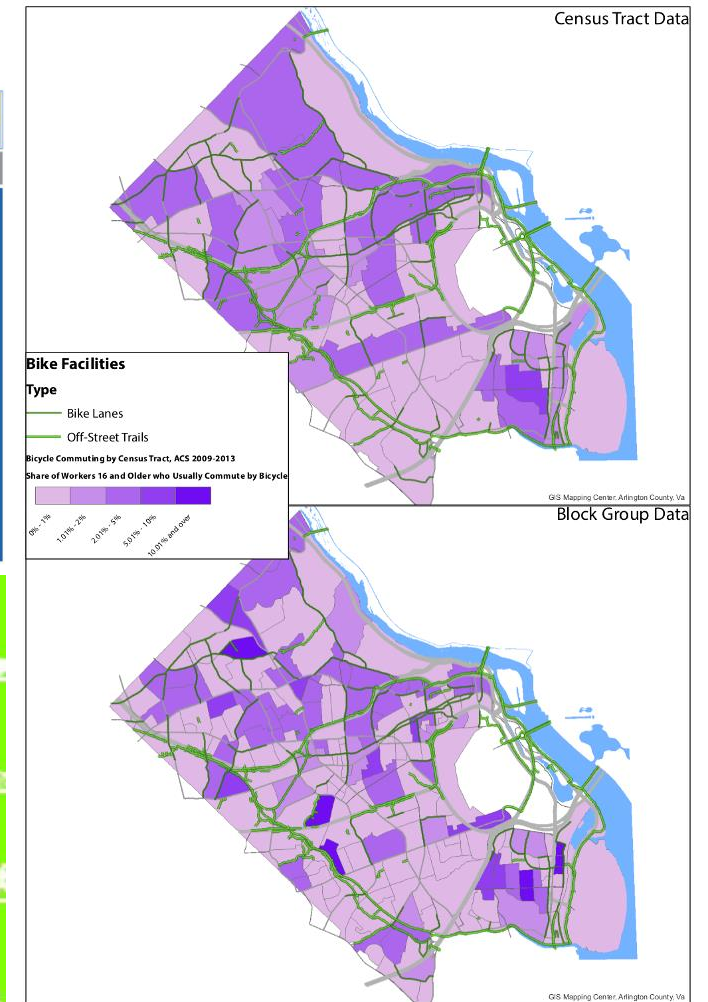


<https://www.apsva.us/aps-go/us/aps-go/>



Bicycle Commuting Among Arlington County Residents

Data from the 2009-2013 American Community Survey 5-Year Series at the Census Tract and Block Group Level.



Planning Considerations

- Roadway space (right-of-way) is limited. Very difficult to get new space.
- Not all streets are locally, owned and controlled. VDOT owns many major arterial streets in Arlington.
- Arlington has a street grid that is city-like in some areas and suburban in others. Connectivity and alternative routes are often limited.
- Established roadway uses can be difficult to change.