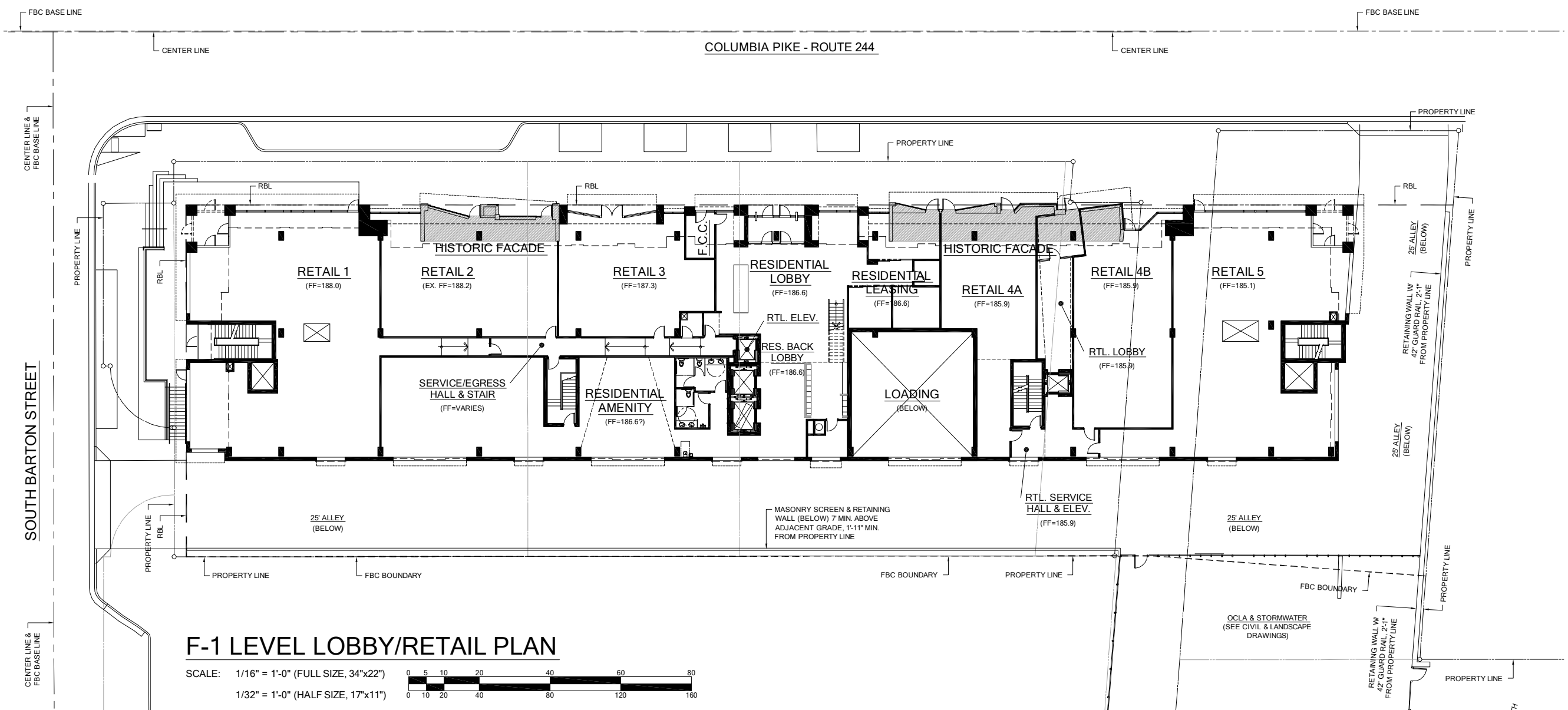
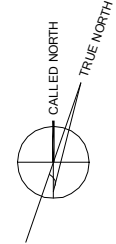
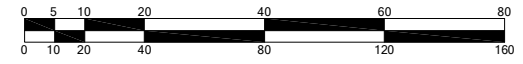


THIS DRAWING AND ITS CONTENTS ARE THE PROPERTY OF W&H ARCHITECTURE & PLANNING. ANY USE OR REPRODUCTION FOR PURPOSES OTHER THAN THOSE PREVIOUSLY AGREED UPON IN WRITING BY W&H ARCHITECTURE & PLANNING IS PROHIBITED.



F-1 LEVEL LOBBY/RETAIL PLAN

SCALE: 1/16" = 1'-0" (FULL SIZE, 34"x22")
 1/32" = 1'-0" (HALF SIZE, 17"x11")



FOUR MILE RUN ASSOC., LLC,
 2338 COLUMBIA PIKE ASSOC., LLC
 AND THE TESTAMENTARY TRUST
 OF BENJAMIN M. SMITH
 600 B. M. SMITH ASSOC., INC.
 2407 COLUMBIA PIKE, SUITE 200
 ARLINGTON, VA 22204
 703-920-2200

W H A
 ARCHITECTURE AND PLANNING
 1408 N. FILLMORE ST., SUITE 9 ARLINGTON, VA 22201
 PH: (703) 920-1888

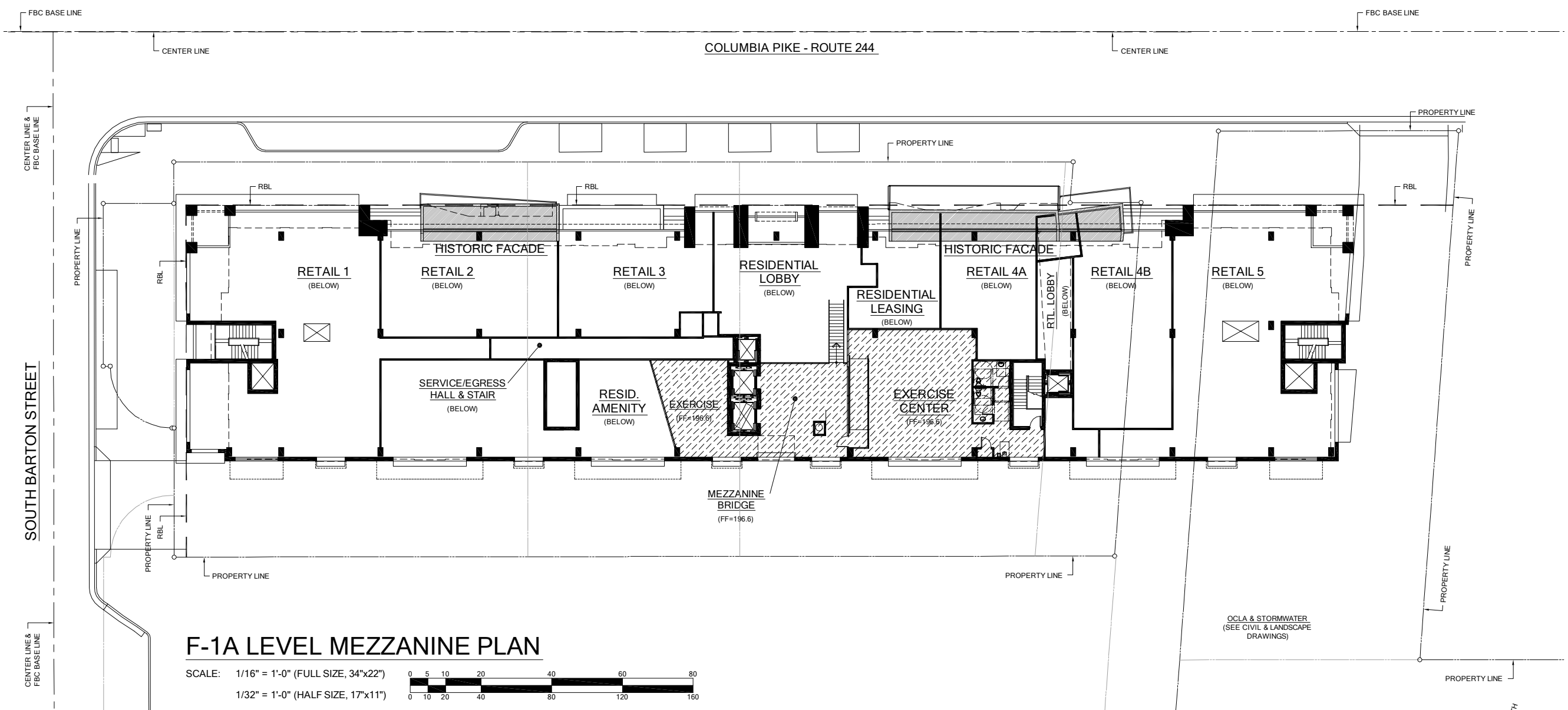
F-1 LEVEL LOBBY/RETAIL FLOOR PLAN
 2400 COLUMBIA PIKE
 ARLINGTON COUNTY
 DESIGN REVIEW

NO.	DATE	DESCRIPTION
7	07/16/15	VE REVISIONS
8	07/21/15	DRC SUBMISSION
3	09/09/15	HALRB SUBMISSION

NO.	DATE	DESCRIPTION
1	06/25/14	DRC RESUBMISSION RESPONSES
2	07/28/14	DRC RESUBMISSION RESPONSES
3	08/06/14	DRC RESUBMISSION REVISION
4	08/13/14	HALRB SUBMISSION
5	10/06/14	STAFF REVIEW RESUBMISSION
6	06/10/15	VE REVISIONS

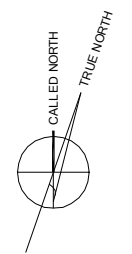
DATE: **MAR 17, 2014**
 DRAWN BY: **bhk** CHECKED BY: **LTK**
 SCALE: **AS NOTED**
 SHEET NO: **A2.03**

THIS DRAWING AND ITS CONTENTS ARE THE PROPERTY OF W&H ARCHITECTURE & PLANNING. ANY USE OR REPRODUCTION FOR PURPOSES OTHER THAN THOSE PREVIOUSLY AGREED UPON IN WRITING BY W&H ARCHITECTURE & PLANNING IS PROHIBITED.



F-1A LEVEL MEZZANINE PLAN

SCALE: 1/16" = 1'-0" (FULL SIZE, 34"x22")
 1/32" = 1'-0" (HALF SIZE, 17"x11")



CLIENT
 FOUR MILE RUN ASSOC., LLC,
 2338 COLUMBIA PIKE ASSOC., LLC
 AND THE TESTAMENTARY TRUST
 OF BENJAMIN M. SMITH
 600 B. M. SMITH ASSOC., INC.
 2407 COLUMBIA PIKE, SUITE 200
 ARLINGTON, VA 22204
 703-920-2200

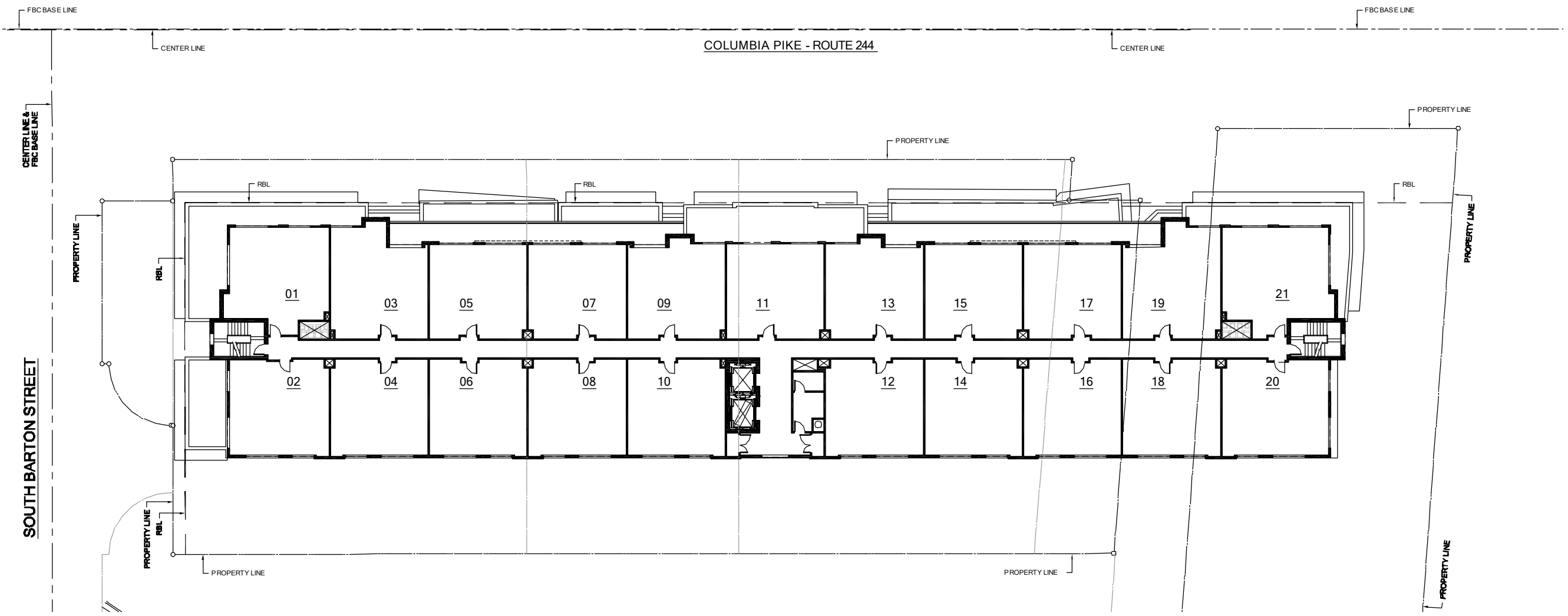
ARCHITECTURE AND PLANNING
W H A
 1408 N. FILLMORE ST., SUITE 9 ARLINGTON, VA 22201
 PH: (703) 920-1188 FAX: (703) 920-1188

PROJECT
 F-1A LEVEL MEZZANINE FLOOR PLAN
 2400 COLUMBIA PIKE
 ARLINGTON COUNTY
 DESIGN REVIEW
 608 COLUMBIA PIKE
 ARLINGTON COUNTY, VA
 ARLINGTON COUNTY, VA

NO.	DATE	DESCRIPTION
7	06/25/14	DRC RESUBMISSION RESPONSES
8	07/21/15	DRC SUBMISSION RESPONSES
3	09/09/15	HALRB SUBMISSION

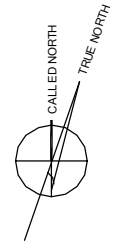
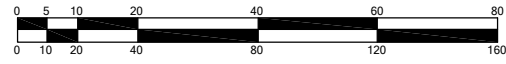
DATE: MAR 17, 2014
 DRAWN BY: bhk CHECKED BY: LTW
 SCALE: AS NOTED
 SHEET NO: A2.04

THIS DRAWING & ITS CONTENTS ARE THE PROPERTY OF WWA ARCHITECTURE & PLANNING. ANY USE OR REPRODUCTION FOR PURPOSES OTHER THAN THOSE PREVIOUSLY AGREED TO IN WRITING BY THE PROJECT INDICATED MUST BE AUTHORIZED IN WRITING BY WWA ARCHITECTURE & PLANNING.



F-2 LEVEL 2ND FLOOR PLAN

SCALE: 1/16" = 1'-0" (FULL SIZE, 34"x22")
 1/32" = 1'-0" (HALF SIZE, 17"x11")



FOUR MILE RUN ASSOC., LLC,
 2338 COLUMBIA PIKE ASSOC., LLC
 AND THE TESTAMENTARY TRUST
 OF BENJAMIN M. SMITH
 c/o B. M. SMITH & ASSOC., INC.
 2407 COLUMBIA PIKE, SUITE 200
 ARLINGTON, VA 22204
 703.920.2200

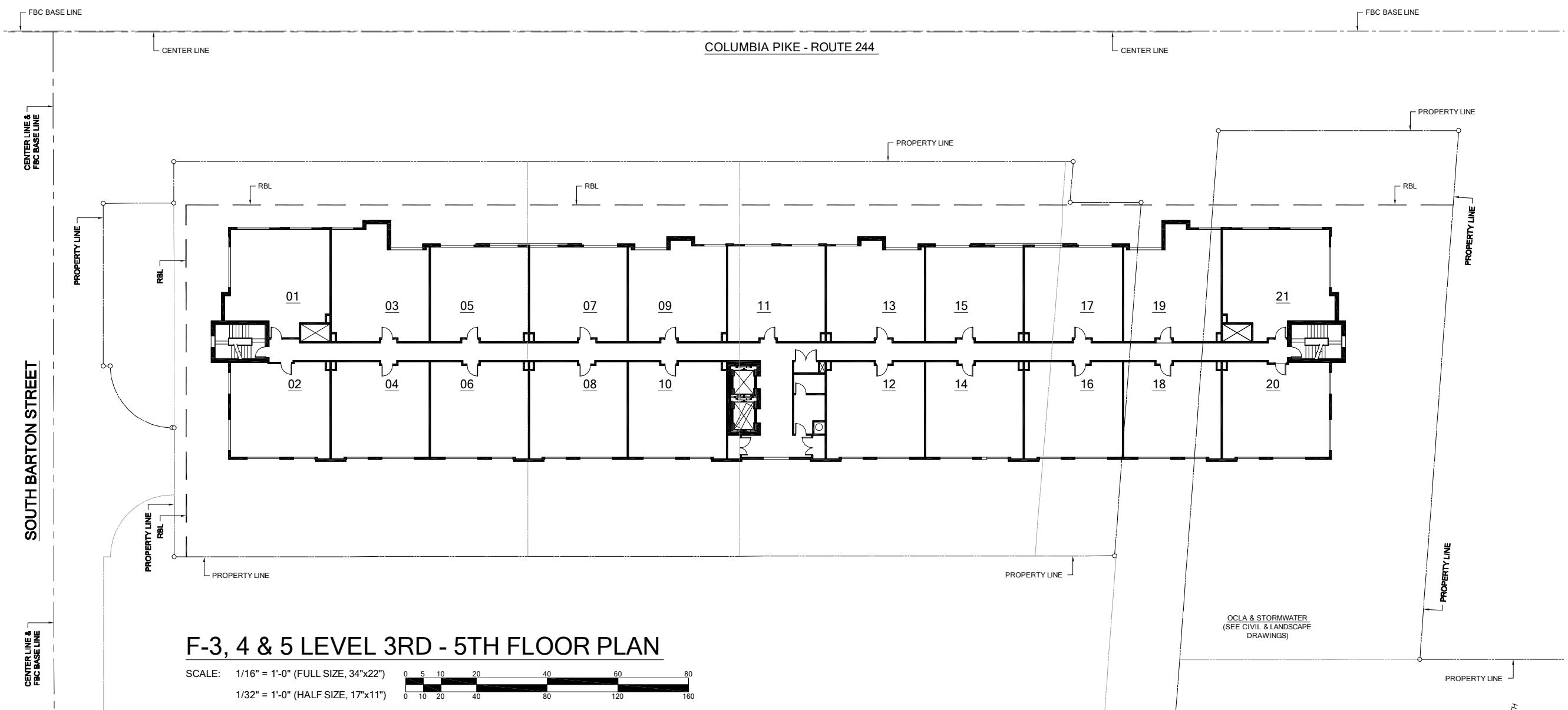
W H A
 ARCHITECTURE AND PLANNING
 1408 N. FILLMORE ST., SUITE 8 ARLINGTON, VA 22201
 703.920.1400

F-2 LEVEL 2ND FLOOR
 FLOOR PLAN
 2400 COLUMBIA PIKE
 ARLINGTON COUNTY
 DESIGN REVIEW
 ARLINGTON, VIRGINIA 22204
 ARLINGTON COUNTY, VA

1	06/25/14	DRC RESUBMISSION RESPONSES
2	07/28/14	DRC RESUBMISSION RESPONSES
3	08/06/14	DRC RESUBMISSION REVISION
4	08/13/14	HALRB SUBMISSION
5	10/06/14	STAFF REVIEW RESUBMISSION
6	06/10/15	VE REVISIONS
7	07/16/15	VE REVISIONS
8	07/21/15	DRC SUBMISSION
3	09/09/15	HALRB SUBMISSION

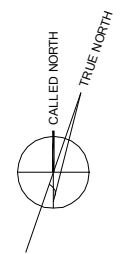
11006
 MAR 17, 2014
 bhk LTW
 AS NOTED
A2.05

THIS DRAWING AND ITS CONTENTS ARE THE PROPERTY OF W&H ARCHITECTURE & PLANNING. ANY USE OR REPRODUCTION FOR PURPOSES OTHER THAN THOSE PREVIOUSLY AGREED TO IN WRITING BY W&H ARCHITECTURE & PLANNING IS PROHIBITED.



F-3, 4 & 5 LEVEL 3RD - 5TH FLOOR PLAN

SCALE: 1/16" = 1'-0" (FULL SIZE, 34"x22")
 1/32" = 1'-0" (HALF SIZE, 17"x11")



NO.	DATE	DESCRIPTION
7	06/25/14	DRC RESUBMISSION RESPONSES
8	07/21/15	DRC SUBMISSION
3	09/09/15	HALRB SUBMISSION

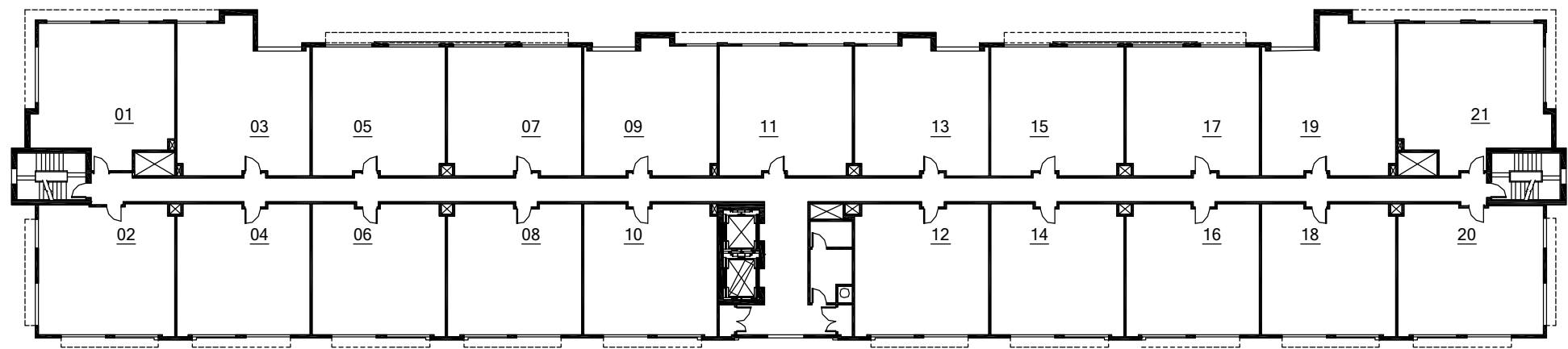
CLIENT
 FOUR MILE RUN ASSOC., LLC,
 2338 COLUMBIA PIKE ASSOC., LLC
 AND THE TESTAMENTARY TRUST
 OF BENJAMIN M. SMITH
 600 B. M. SMITH & ASSOC., INC.
 2407 COLUMBIA PIKE, SUITE 200
 ARLINGTON, VA 22204
 703-920-2200

W H A
 ARCHITECTURE AND PLANNING
 1408 N. FILLMORE ST., SUITE 9 ARLINGTON, VA 22201
 PH: (703) 920-1188 FAX: (703) 920-1188

PROJECT
 F-3, 4 & 5 LEVELS
 2400 COLUMBIA PIKE
 ARLINGTON COUNTY
 DESIGN REVIEW
 600 B. M. SMITH & ASSOC., INC.
 2407 COLUMBIA PIKE, SUITE 200
 ARLINGTON, VA 22204
 ARLINGTON COUNTY, VA

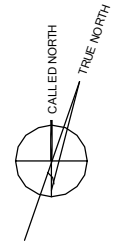
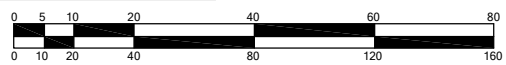
DATE	MAR 17, 2014
CREATED BY	btk
CHECKED BY	LTW
SCALE	AS NOTED
SHEET NO.	A2.06
TOTAL SHEETS	07

THIS DRAWING & ITS CONTENTS ARE THE PROPERTY OF WWA ARCHITECTURE & PLANNING. ANY REUSE OR REPRODUCTION FOR PURPOSES OTHER THAN THOSE PREVIOUSLY AGREED UPON WITH WWA ARCHITECTURE & PLANNING IS PROHIBITED BY WRITING BY WWA ARCHITECTURE & PLANNING.



F-6 LEVEL 6TH FLOOR PLAN

SCALE: 1/16" = 1'-0" (FULL SIZE, 34"x22")
 1/32" = 1'-0" (HALF SIZE, 17"x11")



FOUR MILE RUN ASSOC., LLC,
 2338 COLUMBIA PIKE ASSOC., LLC
 AND THE TESTAMENTARY TRUST
 OF BENJAMIN M. SMITH
 c/o B. M. SMITH & ASSOC., INC.
 2407 COLUMBIA PIKE, SUITE 200
 ARLINGTON, VA 22204
 703.620.2200

W H A
 ARCHITECTURE AND PLANNING
 1408 N. FILLMORE ST., SUITE 8 ARLINGTON, VA 22201
 703.620.2200

F-6 LEVELS
 6TH FLOOR PLAN
 2400 COLUMBIA PIKE
 ARLINGTON COUNTY
 DESIGN REVIEW
 ARLINGTON, VIRGINIA 22204
 ARLINGTON COUNTY, VA

7	07/16/15	VE REVISIONS
8	07/21/15	DRC SUBMISSION
3	09/09/15	HALRB SUBMISSION

1	06/25/14	DRC RESUBMISSION RESPONSES
2	07/28/14	DRC RESUBMISSION RESPONSES
3	08/06/14	DRC RESUBMISSION REVISION
4	08/13/14	HALRB SUBMISSION
5	10/06/14	STAFF REVIEW RESUBMISSION
6	06/10/15	VE REVISIONS

11006
 MAR 17, 2014
 bhk LTW
 AS NOTED
A2.07