

Arlington
Community Facilities Study

A resource and facilities plan for our future

February 25, 2015
Study Committee Meeting – Opening Remarks



February 25, 2015

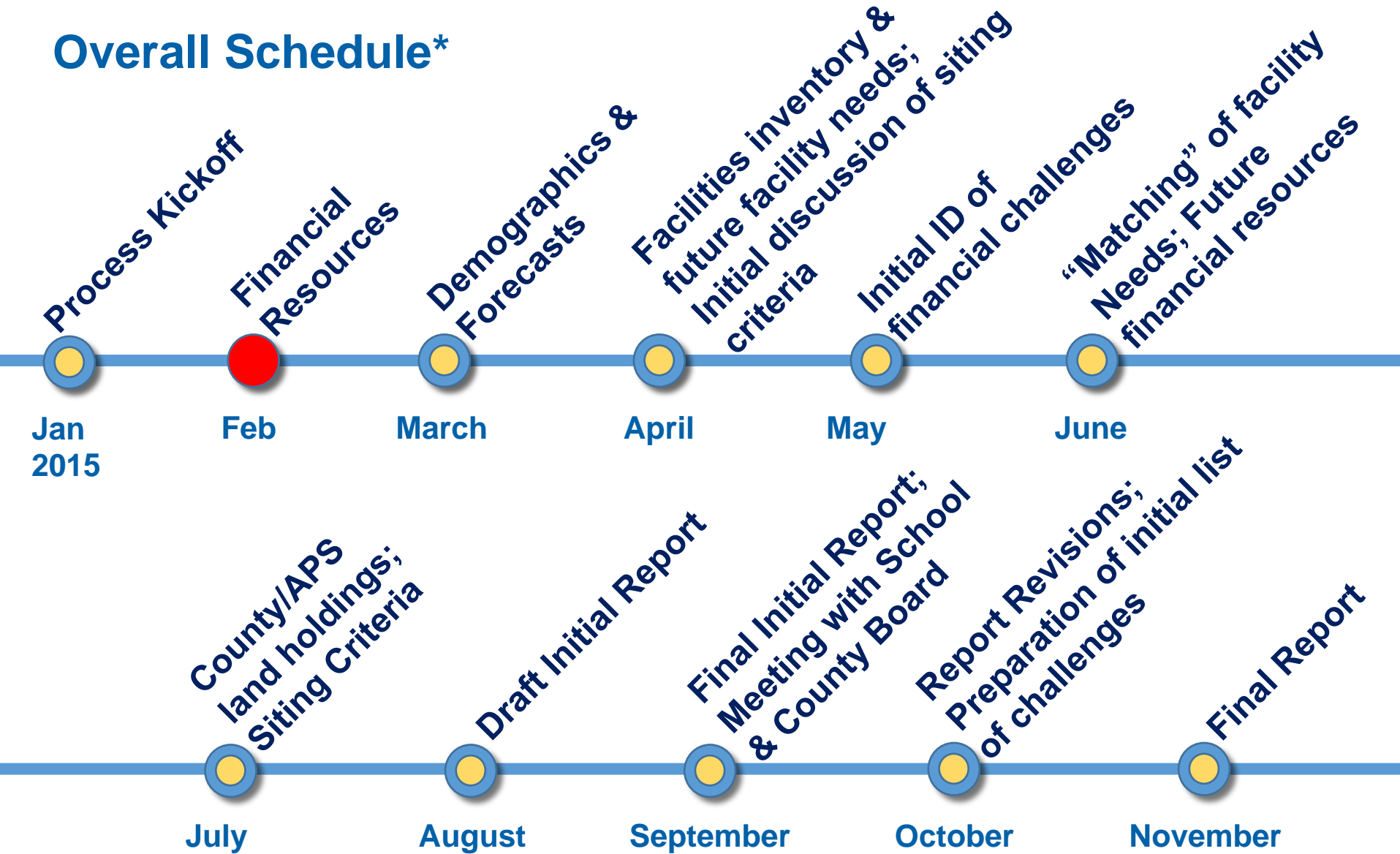
Agenda

1. Review of Charge, Schedule and Organizational Matters (John Milliken)
2. Tonight's Agenda (John Milliken)
3. Presentations and Q&A:
 - **Terry Clower**, Deputy Director, GMU Center for Regional Analysis
 - **Massoud Ahmadi**, Senior Vice President, Strategic Impact Advisors
 - **Alex Iams**, Deputy Director (Acting), Arlington Economic Development
 - **Victor Hoskins**, Director, Arlington Economic Development
4. Table Discussion with Resident Forum
5. Closing Remarks (John Milliken)

County Board and School Board Adopted Charge

Build a consensus framework regarding future revenue and facility needs that will inform County and School Board decision-making related to meeting the community's requirements for additional school, fire station, vehicle storage sites and other facility needs in the context of Arlington's and the region's projected 5, 10 and 20 year economic and demographic growth.

Overall Schedule*



*Schedule subject to refinement

Housekeeping Items

- **Study Committee:** As a rule the Group will operate as a whole will split into sub-committees to discuss challenges:
 - Financials/Economic Development
 - Demographics/Projections
 - Siting Principles
- **Resident Forum** – A group intended to broaden the range of those participating and also intended to serve as the communications link to their own and neighborhoods. A number of formats, including tonight’s table discussion & Saturday workshops, are planned to engage meaningfully with this group.

Follow the Process

- **Project website:**
<http://bit.ly/ACGFacStudy>
and
www.arlingtonva.us
search “Community Facilities Study”
- **Email us:**
ACGFacStudy@arlingtonva.us
- **Check your SPAM folder:** make
CPhD@arlingtonva.us a safe-sender

- WiFi password for APS buildings:
- **Knowledge**

Meeting #2

Tonight

Role of the Resident Forum

- Two-way communication
- Resource and sounding board

Plan for tonight – two parts

- Presentations on economic issues
- Questions on County economic model
- Break Out table discussions

What happens after tonight?

- Subcommittee on economic issues and challenges
- Review of subcommittee report

Meeting #1

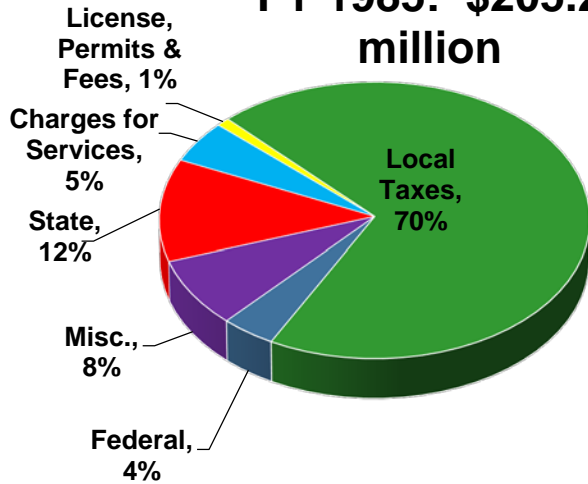
Recap from February 11, 2015

1. Where are the County revenue funds coming from?
2. Role of the commercial sector?
3. What the future may hold?

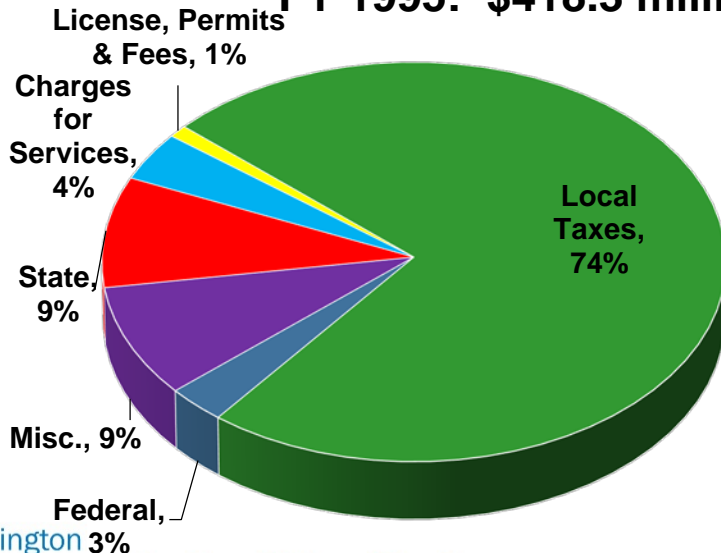
Note – responses to several revenue questions are provided in the handouts; Additional responses will be posted online soon.

General Fund Revenue By Source

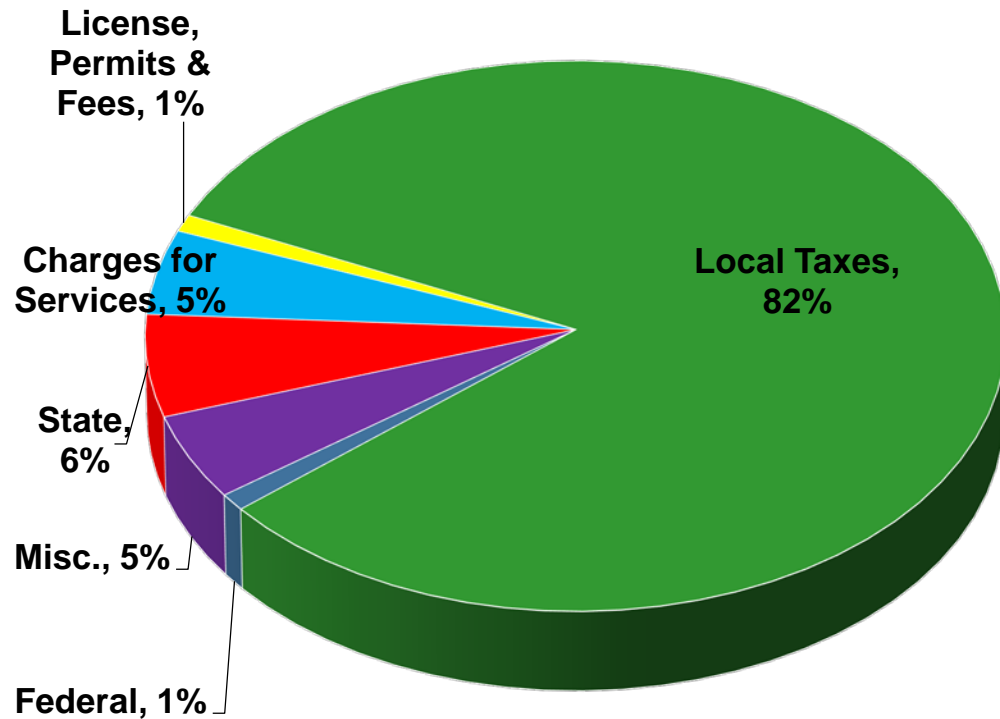
FY 1985: \$205.2 million



FY 1995: \$418.3 million

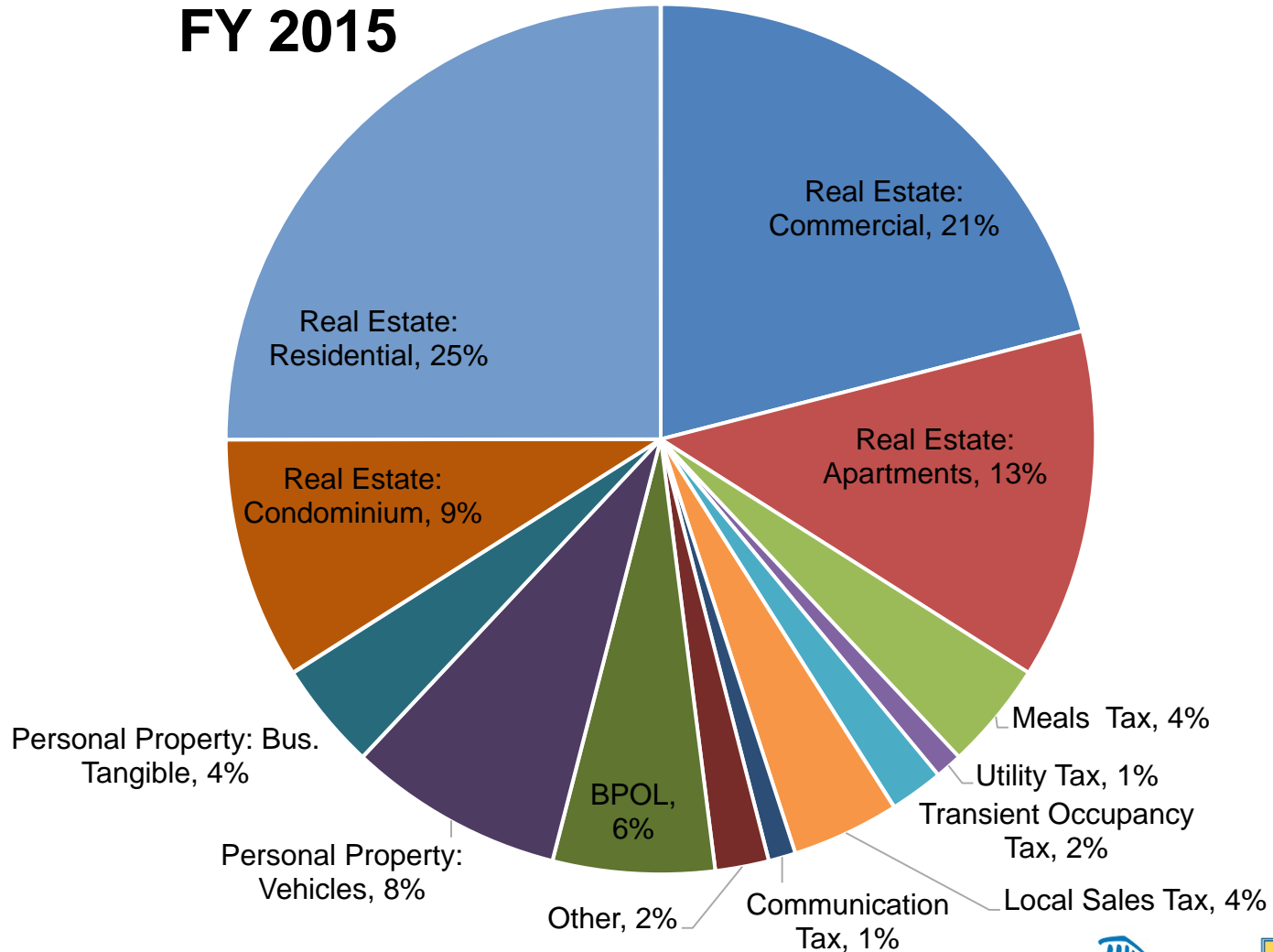


FY 2015: \$1.15 billion



Local Tax Revenue by Source (General Fund)

FY 2015



Real Estate Impact on Homeowner Regionally

Residential assessments as a percentage of total tax base

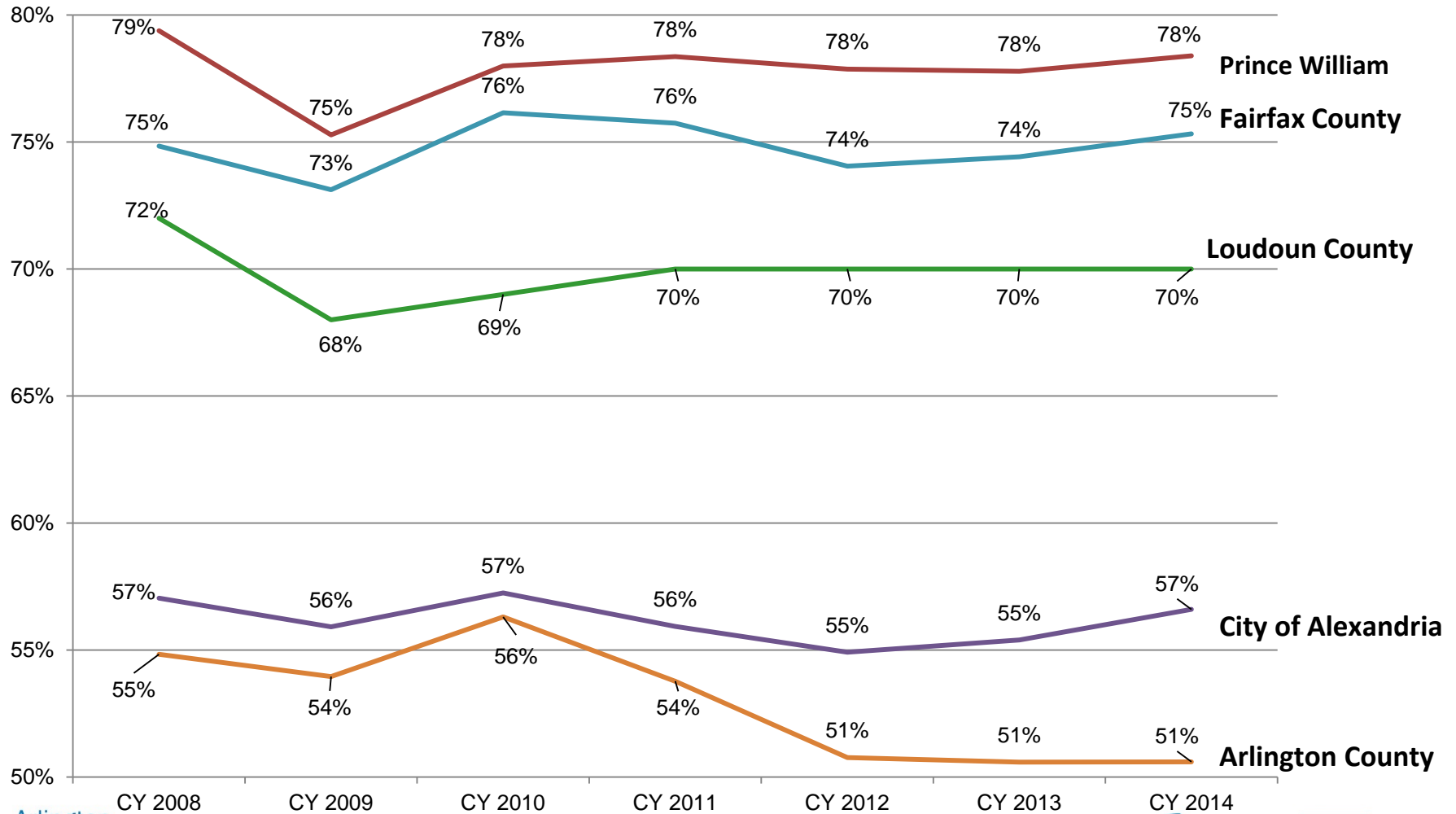


Table Discussions

Questions for review & comment

- What future challenges do you see to Arlington's basic economic model of reliance on the commercial sector (office, multi-family rental residential and retail) for 50 percent of its real estate taxes?
- If challenges exist, what steps or solutions should Arlington consider to address those challenges?
- What constraints or barriers exist to taking those steps or solutions?

Instructions

- Discuss presentation material and questions at your table; Record responses
- Give your documentation to staff
- Staff will compile it and share it with the Financial/Economic Development Subcommittee

Upcoming Dates

ALL ARE INVITED & ENCOURAGED TO ATTEND THE FOLLOWING MEETINGS:

- March 11, 2015 – Location TBD
 - Demographics & Forecasting Forum
- March 25, 2015 – Location TBD
 - Forecasting Assessment