



**lessard**  
DESIGN

LESSARD DESIGN INC

8521 Leesburg Pike Suite 700, Vienna, VA 22182  
P: 703.596.4486 | F: 703.596.0147

WWW.LESSARDDDESIGN.COM

DEVELOPER:  
**PENROSE COLUMBIA PIKE ASSOCIATES, LLC**  
8330 BOONE BOULEVARD  
SUITE 460  
VIENNA, VA 22182  
P: 703.847.5270  
WWW.PENROSEGROUP.COM

CONSULTANTS:  
STRUCTURAL ENGINEER:  
**TBD**  
TBD  
MEP ENGINEER:  
**TBD**  
TBD

LANDSCAPE ARCHITECT:  
**PARKER RODRIGUEZ**  
101 N. UNION STREET  
SUITE 320  
ALEXANDRIA, VA 22314  
P: 703.548.5010  
WWW.PARKERRODRIGUEZ.COM

CIVIL ENGINEER:  
**VIKA, INC**  
8180 GREENSBORO DRIVE  
SUITE 200  
MCLEAN, VA 22102  
P: 703.442.7800  
WWW.VIKA.COM

No.	Description	Date
6	4.1.2 CPBFC - AWG Submission	01/17/2012
5	4.1.2 Submission - Draft (revised)	12/23/2011
4	4.1.2 Submission - Draft	12/16/2011
3	Owner Review	12/09/2011
2	4.1.2 2nd Preliminary Submission	10/21/2011
1	4.1.2 Preliminary Submission	08/08/2011

PROJECT:  
**Columbia Pike & S. Glebe Road**  
Arlington, VA

SHEET TITLE:  
**SITE PLAN**  
North Block

SEAL & SIGNATURE: \_\_\_\_\_ PROJECT No: PEN001a  
DRAWN BY: \_\_\_\_\_  
CHECKED BY: \_\_\_\_\_  
PLOT DATE: \_\_\_\_\_

**A-N100**  
FILE NAME: PEN001a

**1** North Block Site Plan  
A-N100 SCALE: 1:20 24x36L1-Sheet2 (2)







**lessard**  
DESIGN

LESSARD DESIGN INC

8521 Leesburg Pike Suite 700, Vienna, VA 22182  
P: 703.596.4486 | F: 703.596.0147

WWW.LESSARDDDESIGN.COM

LESSARD DESIGN, INC. EXPRESSLY DISCLAIMS ITS COMMONLAW COPYRIGHT AND OTHER PROPERTIES RIGHTS IN THESE PLANS. THESE PLANS ARE NOT TO BE REPRODUCED, COPIED OR STORED IN ANY FORM OR MANNER WHATSOEVER, NOR ARE THEY TO BE ASSIGNED TO ANY THIRD PARTY, WITHOUT FIRST OBTAINING THE EXPRESS WRITTEN PERMISSION AND CONSENT OF LESSARD DESIGN, INC.

DEVELOPER:

**PENROSE COLUMBIA PIKE ASSOCIATES, LLC**  
8330 BOONE BOULEVARD  
SUITE 400  
VIENNA, VA 22182  
P: 703.847.5270  
WWW.PENROSEGROUP.COM

CONSULTANTS:

STRUCTURAL ENGINEER:

**TBD**  
TBD

MEP ENGINEER:

**TBD**  
TBD

LANDSCAPE ARCHITECT:

**PARKER RODRIGUEZ**  
101 N. UNION STREET  
SUITE 320  
ALEXANDRIA, VA 22314  
P: 703.548.5010  
WWW.PARKERRODRIGUEZ.COM

CIVIL ENGINEER:

**VIKA, INC**  
8180 GREENSBORO DRIVE  
SUITE 200  
MCLEAN, VA 22102  
P: 703.442.7800  
WWW.VIKA.COM

No.	Description	Date
5	4.1.2 CFFBC - AWG Submission	01/17/2012
4	4.1.2 Submission -- Draft	12/16/2011
3	Owner Review	12/09/2011
2	4.1.2 2nd Preliminary Submission	10/21/2011
1	4.1.2 Preliminary Submission	08/08/2011

PROJECT:

**Columbia Pike & S. Glebe Road**  
Arlington, VA

SHEET TITLE:

**Building Elevations**  
North Block

SEAL & SIGNATURE:

PROJECT NO: PEN001a

DRAWN BY:

CHECKED BY:

PLOT DATE:

**A-N200**

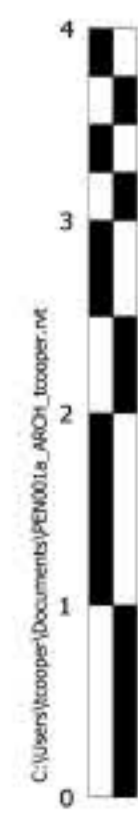
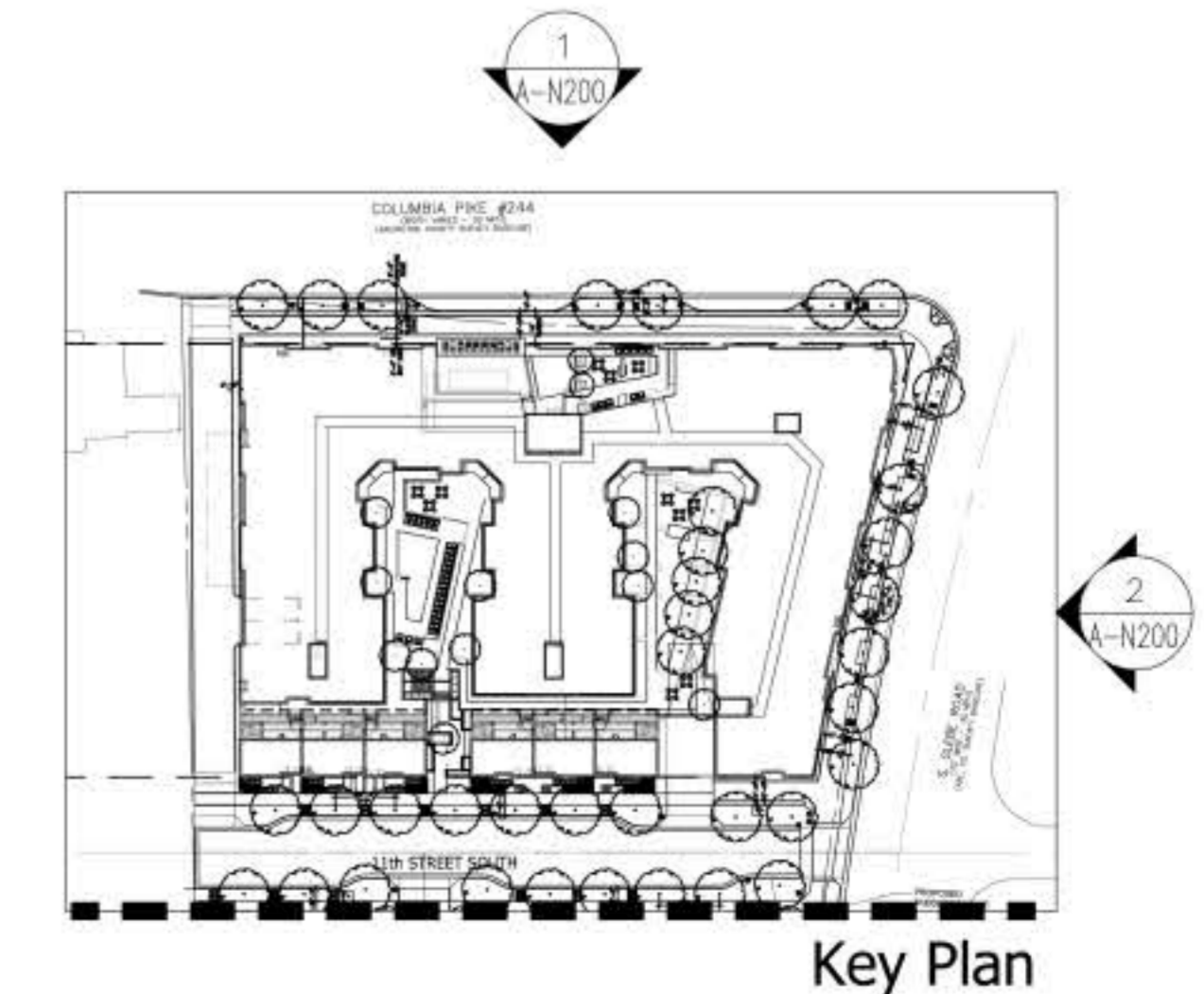
FILE NAME: PEN001a



**1 Columbia Pike Elevation**  
A-N200 SCALE: 1/16" = 1'-0" 24x36L1-Sheet2 (2)



**2 S. Glebe Road Elevation**  
A-N200 SCALE: 1/16" = 1'-0" 24x36L1-Sheet2 (2)







**lessard**  
DESIGN

LESSARD DESIGN INC

8521 Leesburg Pike Suite 700, Vienna, VA 22182  
P: 703.596.4486 | F: 703.596.0147

WWW.LESSARDDDESIGN.COM

©2011 LESSARD DESIGN INC. EXPRESSLY RESERVES ITS COMMERCIAL COPYRIGHT AND OTHER PROPERTY RIGHTS IN THESE PLANS. THESE PLANS ARE NOT TO BE REPRODUCED, COPIED OR CIRCULATED IN ANY FORM OR BY ANY MEANS, WITHOUT THE EXPRESS WRITTEN PERMISSION AND CONSENT OF LESSARD DESIGN INC.

DEVELOPER:

**PENROSE COLUMBIA PIKE ASSOCIATES, LLC**

8330 BOONE BOULEVARD  
SUITE 400  
VIENNA, VA 22182  
P: 703.847.5270

WWW.PENROSEGROUP.COM

CONSULTANTS:

STRUCTURAL ENGINEER:

**TBD**

TBD

MEP ENGINEER:

**TBD**

TBD

LANDSCAPE ARCHITECT:

**PARKER RODRIGUEZ**

101 N. UNION STREET  
SUITE 320  
ALEXANDRIA, VA 22314  
P: 703.548.5010  
WWW.PARKERRODRIGUEZ.COM

CIVIL ENGINEER:

**VIKA, INC**

8180 GREENSBORO DRIVE  
SUITE 200  
MCLEAN, VA 22102  
P: 703.442.7800  
WWW.VIKA.COM

No.	Description	Date
5	4.1.2 CPEBC - AWG Submission	01/17/2012
4	4.1.2 Submission -- Draft	12/16/2011
3	Owner Review	12/09/2011
2	4.1.2 2nd Preliminary Submission	10/21/2011
1	4.1.2 Preliminary Submission	08/08/2011

PROJECT:

**Columbia Pike & S. Glebe Road**  
Arlington, VA

SHEET TITLE:

**Building Elevations**  
North Block

SEAL & SIGNATURE:

PROJECT No: PPN001A

DRAWN BY:

CHECKED BY:

PLOT DATE:

**A-N201**

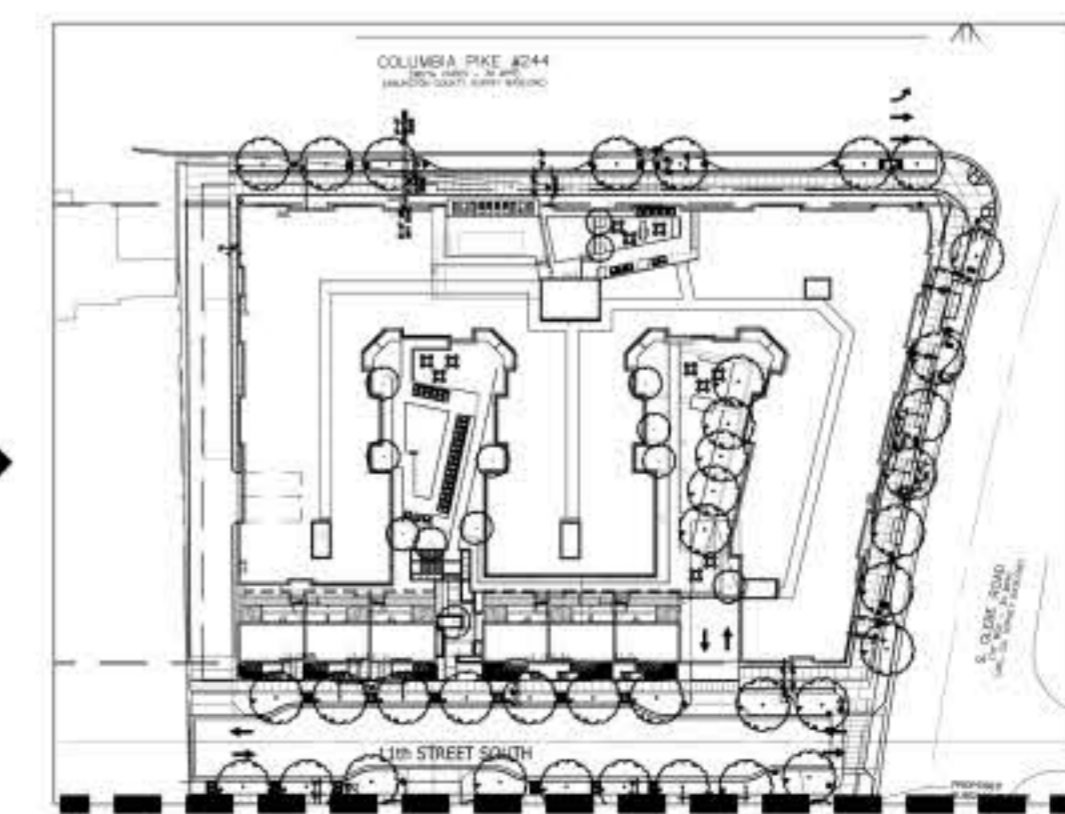
FILE NAME: PPN001A



**1**  
**11th Street Elevation**  
SCALE: 1/16" = 1'-0" 24x36LD1-Sheet2 (2)



**2**  
**Alley Elevation**  
SCALE: 1/16" = 1'-0" 24x36LD1-Sheet2 (2)



**Key Plan**

C:\Users\jgasper\Documents\PPN001A\_ARCH\_100ppr.rvt