

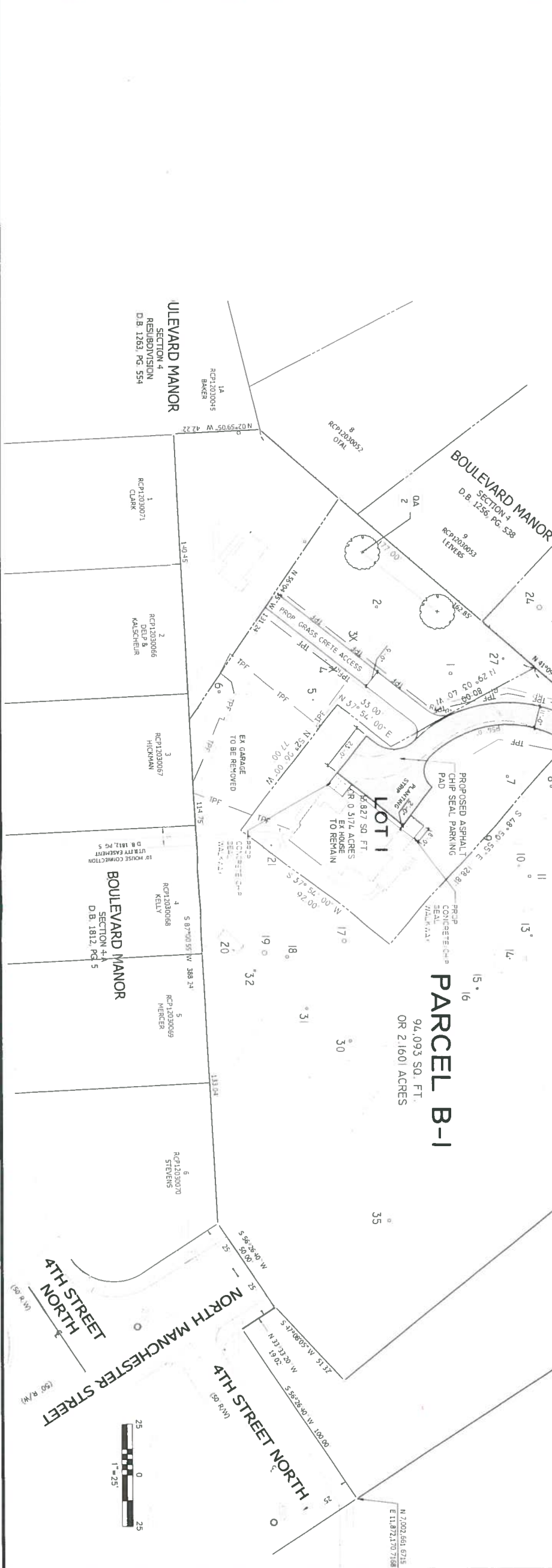


Reeves Farm Tree Inventory  
Tree Survey Information Completed by: Kathy von Bredow #MA-4729A

#	Botanical Name	Common Name	Size (DBH)	Height (CR2)	Species Rating	Condition %	Action	Comments	Replacement Ratio
1	Quercus alba	White Oak	18"	18'	70%	88%	To remain, protect		1:1
2	Quercus alba	White Oak	18"	18'	70%	88%	To remain, protect		1:1
3	Quercus alba	White Oak	18"	18'	70%	88%	To remain, protect		1:1
4	Quercus alba	White Oak	18"	18'	70%	88%	To remain, protect		1:1
5	Quercus alba	White Oak	18"	18'	70%	88%	To remain, protect		1:1
6	Quercus alba	White Oak	18"	18'	70%	88%	To remain, protect		1:1
7	Quercus alba	White Oak	18"	18'	70%	88%	To remain, protect		1:1
8	Quercus alba	White Oak	18"	18'	70%	88%	To remain, protect		1:1
9	Quercus alba	White Oak	18"	18'	70%	88%	To remain, protect		1:1
10	Quercus alba	White Oak	18"	18'	70%	88%	To remain, protect		1:1
11	Quercus alba	White Oak	18"	18'	70%	88%	To remain, protect		1:1
12	Quercus alba	White Oak	18"	18'	70%	88%	To remain, protect		1:1
13	Quercus alba	White Oak	18"	18'	70%	88%	To remain, protect		1:1
14	Quercus alba	White Oak	18"	18'	70%	88%	To remain, protect		1:1
15	Quercus alba	White Oak	18"	18'	70%	88%	To remain, protect		1:1
16	Quercus alba	White Oak	18"	18'	70%	88%	To remain, protect		1:1
17	Quercus alba	White Oak	18"	18'	70%	88%	To remain, protect		1:1
18	Quercus alba	White Oak	18"	18'	70%	88%	To remain, protect		1:1
19	Quercus alba	White Oak	18"	18'	70%	88%	To remain, protect		1:1
20	Quercus alba	White Oak	18"	18'	70%	88%	To remain, protect		1:1
21	Quercus alba	White Oak	18"	18'	70%	88%	To remain, protect		1:1
22	Quercus alba	White Oak	18"	18'	70%	88%	To remain, protect		1:1
23	Quercus alba	White Oak	18"	18'	70%	88%	To remain, protect		1:1
24	Quercus alba	White Oak	18"	18'	70%	88%	To remain, protect		1:1
25	Quercus alba	White Oak	18"	18'	70%	88%	To remain, protect		1:1
26	Quercus alba	White Oak	18"	18'	70%	88%	To remain, protect		1:1
27	Quercus alba	White Oak	18"	18'	70%	88%	To remain, protect		1:1
28	Quercus alba	White Oak	18"	18'	70%	88%	To remain, protect		1:1
29	Quercus alba	White Oak	18"	18'	70%	88%	To remain, protect		1:1
30	Quercus alba	White Oak	18"	18'	70%	88%	To remain, protect		1:1
31	Quercus alba	White Oak	18"	18'	70%	88%	To remain, protect		1:1
32	Quercus alba	White Oak	18"	18'	70%	88%	To remain, protect		1:1
33	Quercus alba	White Oak	18"	18'	70%	88%	To remain, protect		1:1
34	Quercus alba	White Oak	18"	18'	70%	88%	To remain, protect		1:1
35	Quercus alba	White Oak	18"	18'	70%	88%	To remain, protect		1:1

PLANTING SCHEDULE

KEY	QTY	LATIN NAME	COMMON NAME	SIZE	SPACING	NOTE
1	2	Quercus alba	White Oak	1.25" DBH	As shown	



ARLINGTON VIRGINIA  
DEPARTMENT OF PARKS AND RECREATION

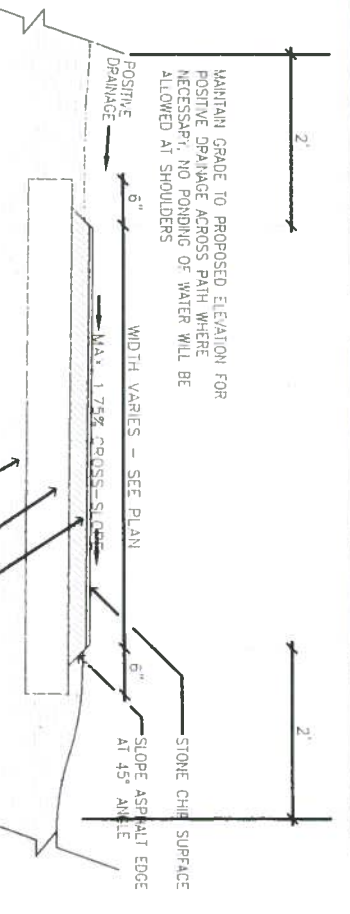
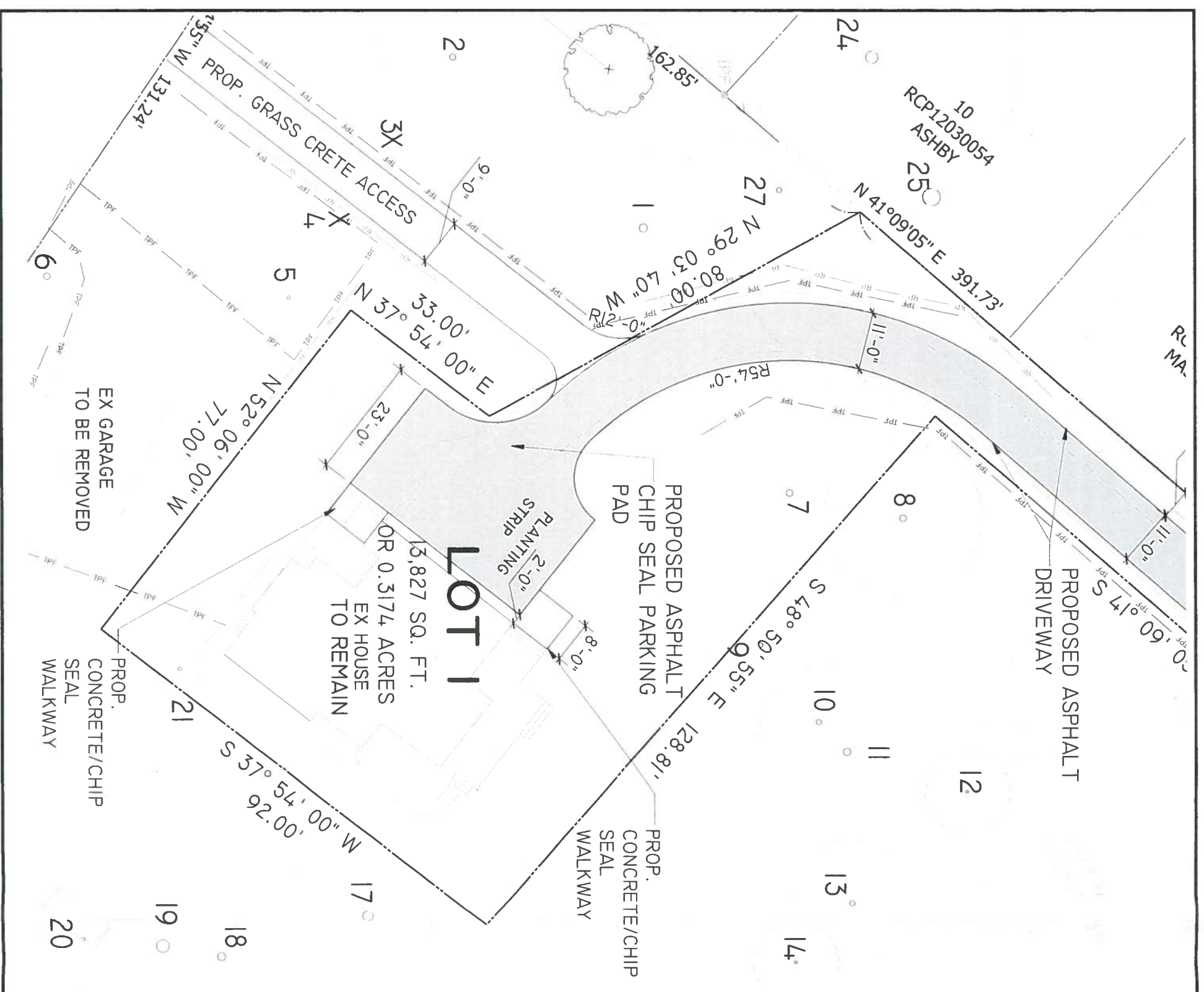
2100 Cameron Boulevard, Suite 414  
Arlington, VA 22201  
Phone: 703.228.1300

Project Name and Location  
**REEVES FARM**  
500 N MANCHESTER ST.  
ARLINGTON, VA  
XXXX

Scale  
**INVENTORY and LANDSCAPE CONSERVATION PLAN**



Approved: \_\_\_\_\_ Date: \_\_\_\_\_  
Department Director  
Design Unit Supervisor  
Revisions: \_\_\_\_\_ Date: \_\_\_\_\_  
Designed: KVD  
Drawn: KVD  
Checked: \_\_\_\_\_  
File Name: 20150717ReevesFarmSite.dwg  
Scale: 1" = 25'-0"  
Date: Jul 24 2015  
Sheet: \_\_\_\_\_ of \_\_\_\_\_



TO ACHIEVE A NATURAL STONE SURFACE AESTHETIC, CONTRACTOR SHALL APPLY A 1/4 INCH THICK LAYER OF STONE CHIPS OVER THE SURFACE OF ASPHALT PRIOR TO ROLLING. AFTER ROLLING APPLY A LIGHT TACK COAT WITH AN ADDITIONAL 1/4 INCH THICK LAYER OF STONE CHIPS - REPEAT ROLLING STONE PRODUCT TO BE VDOT #6 STONE.

\*\* CHIP SEAL SURFACE MAY ALSO BE PROVIDED OVER INSTALLED ASPHALT PAVEMENT AS AN ALTERNATE OPTION OR CONTRACTOR MAY SUBMIT ALTERNATE METHOD OF STONE CHIP SURFACE TREATMENT TO ACHIEVE DESIRED LOOK OF DRIVEWAY AND WALKWAYS FOR REVIEW AND APPROVAL.

**ASPHALT DRIVE/WALKWAYS WITH CHIP SEAL**

Scale not to scale

**ARLINGTON**  
VIRGINIA

DEPARTMENT OF PARKS  
AND RECREATION

Par Development Division  
2100 Cameron Boulevard Suite 414  
Arlington, VA 22204  
Phone: 703.221.3201  
Fax: 703.221.3202

Project Name and Location  
**REEVES  
FARM**

500 N MANCHESTER ST.  
ARLINGTON, VA  
XXXX

Sheet Title  
**LANDSCAPE  
PLAN  
ENLARGEMENT  
AND DETAILS**



Approval \_\_\_\_\_ Date \_\_\_\_\_  
Department Director

Design Unit Supervisor  
Park Development Division Chief

Revisions \_\_\_\_\_ Date \_\_\_\_\_

Designed: kvb  
Drawn: kvb  
Checked: \_\_\_\_\_  
File Name: 20151017\_reeves\_fm Base.dwg

Scale: 1" = 25'-0"  
Date: Jul 24, 2015

Sheet \_\_\_\_\_ of \_\_\_\_\_