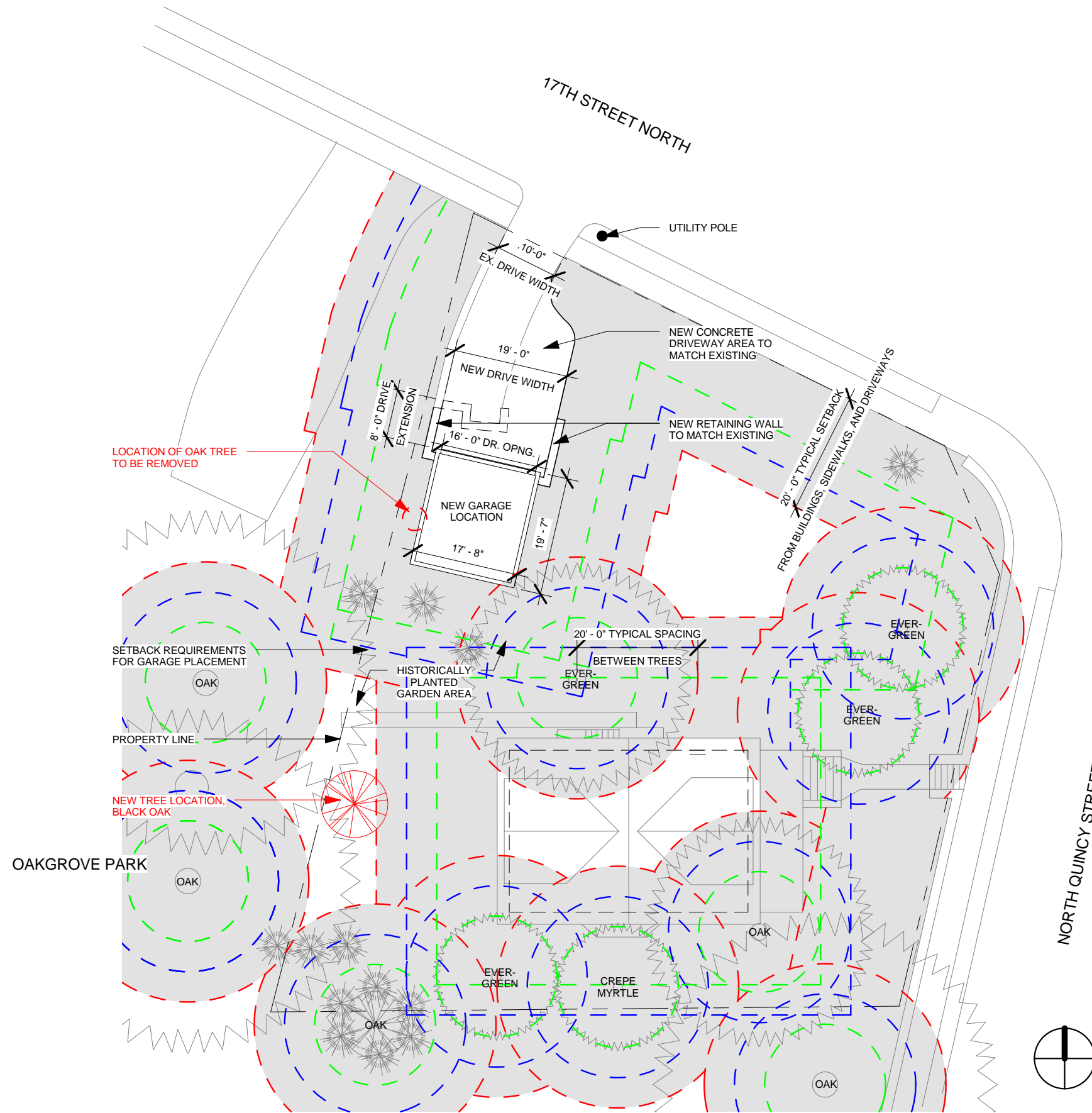


**NEW TREE PROPOSAL:**

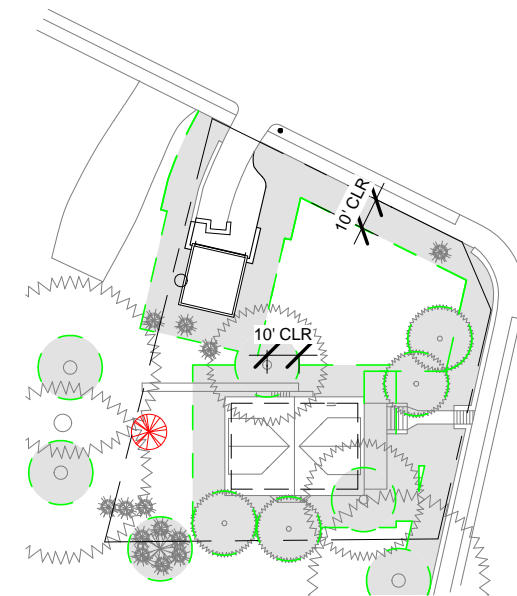
**REQUEST REDUCTION OF TREES TO ONE NEW TREE. PLANTED AS SHOWN IN REAR YARD IN PROXIMITY TO WHERE A PREVIOUS OAK TREE FELL OVER DURING A STORM IN THE SUMMER OF 2013.**



**SITE PLAN - TREE PLANTING CONSTRAINTS - REVISED**  
 SCALE: 1" = 20'-0" NOTE SHADED AREA INDICATES 20' MINIMUM CLEAR.

**LEGEND:**

- 20'-0" MIN. CLEAR - - - - -
- 15'-0" MIN. CLEAR - - - - -
- 10'-0" MIN. CLEAR - - - - -



**TREE PLANTING CONSTRAINTS - 10' MIN. CLR.**  
 SCALE: 1" = 60'-0"

**McDermott Residence @ The Fraber House**

1612 North Quincy Street \* Arlington, VA 22207

Date  
11/13/14